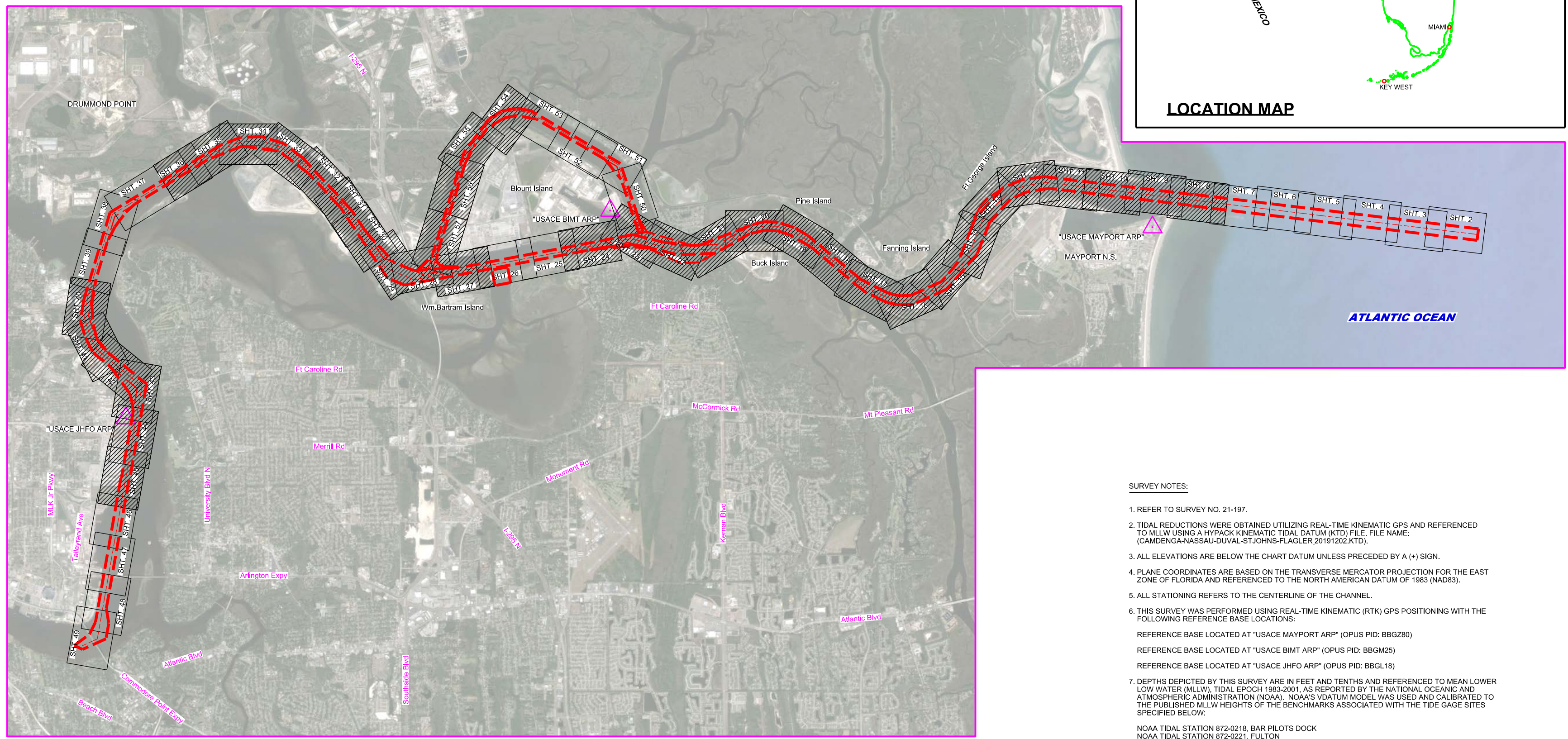
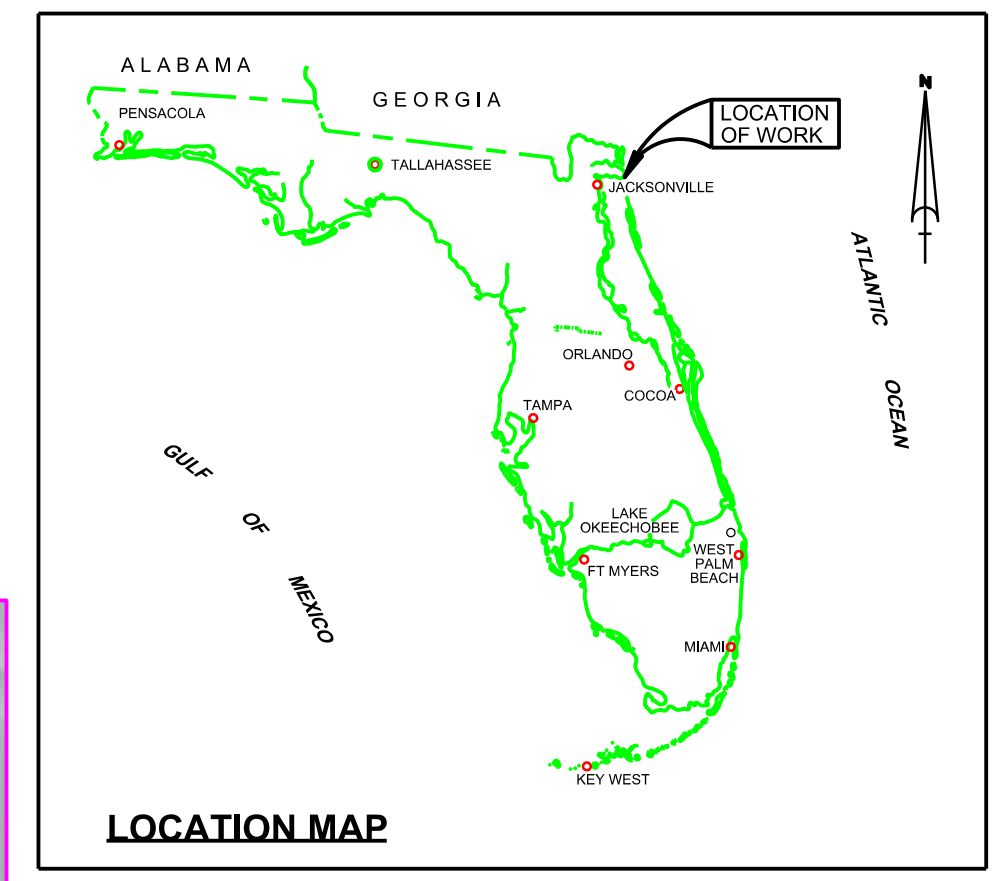


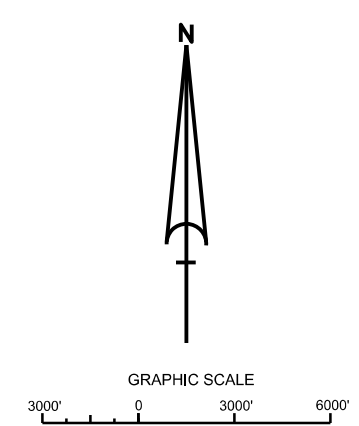
JACKSONVILLE HARBOR, FLORIDA 3rd QUARTER EXAM SURVEY FY21 30, 34, 38, 40 & 42-FOOT PROJECT



SURVEY NOTES:

- REFER TO SURVEY NO. 21-197.
 - TIDAL REDUCTIONS WERE OBTAINED UTILIZING REAL-TIME KINEMATIC GPS AND REFERENCED TO MLLW USING A HYPACK KINEMATIC TIDAL DATUM (KT) FILE. FILE NAME: (CAMDENGASASSAU-DUVAL-ST.JOHNS-FLAGLER 20191202.KT).
 - ALL ELEVATIONS ARE BELOW THE CHART DATUM UNLESS PRECEDED BY A (+) SIGN.
 - PLANE COORDINATES ARE BASED ON THE TRANSVERSE MERCATOR PROJECTION FOR THE EAST ZONE OF FLORIDA AND REFERENCED TO THE NORTH AMERICAN DATUM OF 1983 (NAD83).
 - ALL STATIONING REFERS TO THE CENTERLINE OF THE CHANNEL.
 - THIS SURVEY WAS PERFORMED USING REAL-TIME KINEMATIC (RTK) GPS POSITIONING WITH THE FOLLOWING REFERENCE BASE LOCATIONS:
 REFERENCE BASE LOCATED AT "USACE MAYPORT ARP" (OPUS PID: BBG280)
 REFERENCE BASE LOCATED AT "USACE BIMT ARP" (OPUS PID: BBGM25)
 REFERENCE BASE LOCATED AT "USACE JHFO ARP" (OPUS PID: BBGL18)
 - DEPTHS DEPICTED BY THIS SURVEY ARE IN FEET AND TENTHS AND REFERENCED TO MEAN LOWER LOW WATER (MLLW), TIDAL EPOCH 1983-2001, AS REPORTED BY THE NATIONAL OCEANIC AND ATMOSPHERIC ADMINISTRATION (NOAA). NOAA'S DATUM MODEL WAS USED AND CALIBRATED TO THE PUBLISHED MLLW HEIGHTS OF THE BENCHMARKS ASSOCIATED WITH THE TIDE GAGE SITES SPECIFIED BELOW:
 NOAA TIDAL STATION 872-0218, BAR PILOTS DOCK
 NOAA TIDAL STATION 872-0221, FULTON
 NOAA TIDAL STATION 872-0219, DAMES POINT
 NOAA TIDAL STATION 872-0215, NAVY FUEL DEPOT
 NOAA TIDAL STATION 872-0242, LONG BRANCH
 - VERTICAL MEASUREMENTS WERE MADE USING A R2 SONIC MODEL 2024 MULTI-BEAM SYSTEM (240 KHZ), A ROSS MODEL 835C SMARTSOUNDER WITH A DUAL-FREQUENCY (28/200 KHZ) SINGLE-BEAM TRANSDUCER, A RESON T20P MULTI-BEAM SYSTEM (300 KHZ), AN EDGETECH 6205 MULTI-BEAM (550 KHZ) AND AN ECHOTRAC E20 WITH A SINGLE-BEAM TRANSDUCER (28/200 KHZ). ALL SOUNDINGS SHOWN IN HIGH FREQUENCY EXCEPT FOR TERMINAL CHANNEL STATIONS 0+00 THRU 72+00 WHICH ARE IN LOW FREQUENCY (28 KHZ).
- | VESSEL | DATE OF SURVEY | AREA SURVEYED |
|---------------|----------------|--------------------------------|
| SV FLORIDA II | 19 JUL 2021 | CUTS F & G |
| SV FLORIDA II | 20 JUL 2021 | BC-3 STA 180-300 THRU CUT-7 |
| SV SALZER | 17 AUG 2021 | CUTS 8 THRU 16 |
| SB-36 | 19 AUG 2021 | CUTS 47 THRU 50 |
| SB-48 | 19 AUG 2021 | UTC, CUTS 53 THRU 55 |
| SB-36 | 23 AUG 2021 | CUTS 45 & 46 |
| SB-44 | 24 AUG 2021 | CUTS 17 THRU 19 |
| SB-36 | 24 AUG 2021 | CUT-42, STA 131+00 THRU CUT-44 |
| SB-44 | 25 AUG 2021 | CUTS 39 THRU 42 |
- AIDS TO NAVIGATION WERE LOCATED FOR THIS SURVEY.
 - THE INFORMATION DEPICTED ON THIS MAP REPRESENTS THE RESULTS OF SURVEYS MADE ON THE DATES INDICATED ABOVE AND CAN ONLY BE CONSIDERED AS INDICATING THE GENERAL CONDITIONS AT THAT TIME. THIS CHART IS SOLELY FOR THE DISTRIBUTION OF AVAILABLE DEPTHS AT THE TIME OF SURVEY.
 - SURVEY ACCURACY STANDARDS, QUALITY CONTROL, AND QUALITY ASSURANCE REQUIREMENTS WERE FOLLOWED DURING THIS SURVEY IN ACCORDANCE WITH USACE EM 1110-2-1003, HYDROGRAPHIC SURVEYING, 30 NOV 2013.

LEGEND	
	MONUMENT
	LIGHTED BEACON
	GREEN DAYBEACON
	RED DAYBEACON
	RED LIGHTED BUOY
	GREEN LIGHTED BUOY
	CAN BUOY
	NUN BUOY
	TIDE STAFF
	PROJECT DEPTH

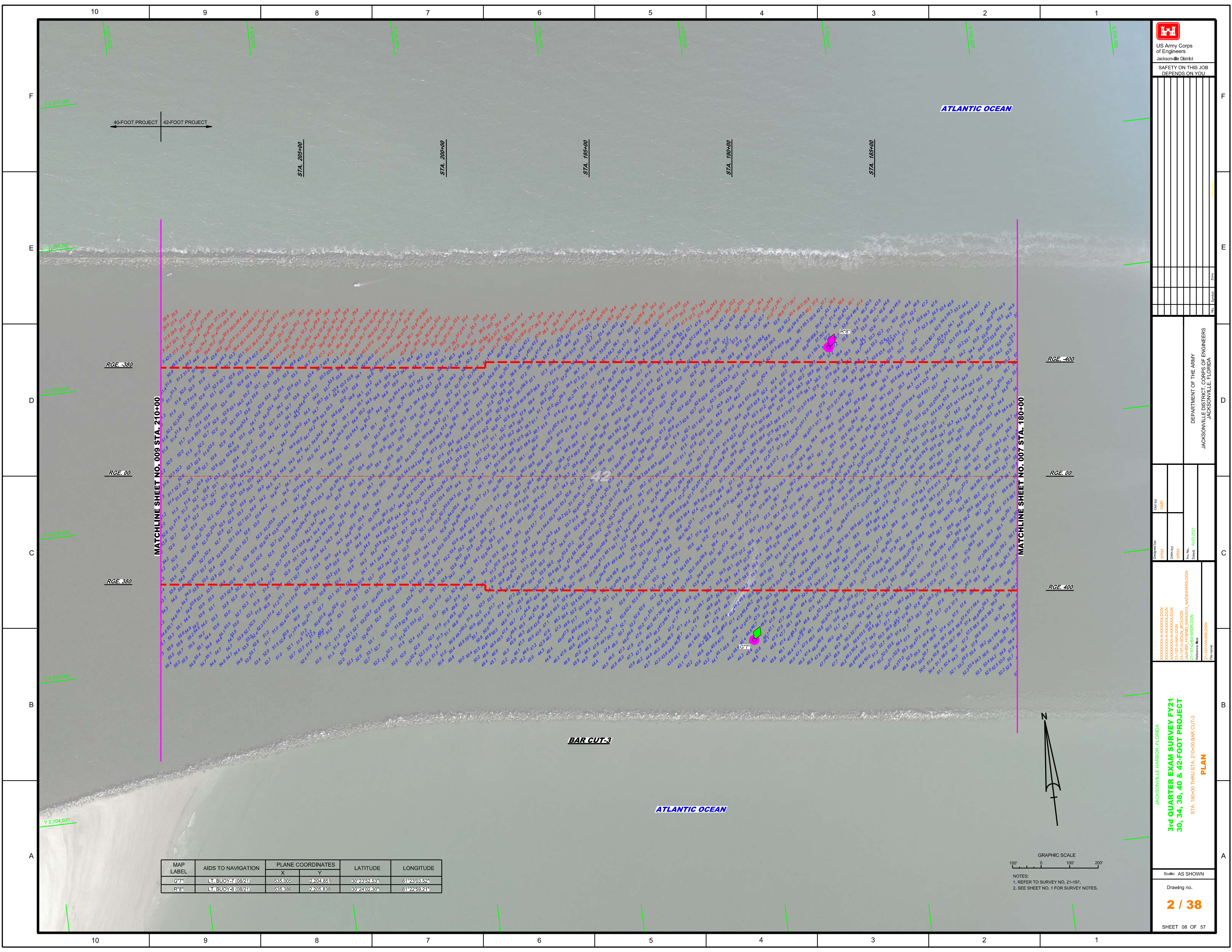


US Army Corps of Engineers
Jacksonville District
SAFETY ON THIS JOB DEPENDS ON YOU

DEPARTMENT OF THE ARMY
JACKSONVILLE DISTRICT, CORPS OF ENGINEERS
JACKSONVILLE, FLORIDA

2nd QUARTER EXAM SURVEY FY21
30, 34, 38, 40 & 42-FOOT PROJECT
INDEX, LOCATION AND VICINITY MAP

Scale: AS SHOWN
Drawing no. 1 / 38
SHEET 01 OF 57



US Army Corps of Engineers

 Jacksonville District

 SAFETY ON THIS JOB

 DEPENDS ON YOU

DEPARTMENT OF THE ARMY

 JACKSONVILLE DISTRICT, CORPS OF ENGINEERS

 JACKSONVILLE, FLORIDA

JACKSONVILLE HARBOR, FLORIDA

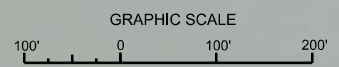
3rd QUARTER EXAM SURVEY FY21

30, 34, 38, 40 & 42-FOOT PROJECT

 STA. 180+00 THRU STA. 210+00 BAR CUT-3

PLAN

MAP LABEL	AIDS TO NAVIGATION	PLANE COORDINATES		LATITUDE	LONGITUDE
		X	Y		
G7*	LT. BUOY-7 (0821)	535,005	2,204,851	30°24'52.53"	81°22'59.24"
R8*	LT. BUOY-8 (0821)	535,386	2,205,638	30°24'02.30"	81°22'59.21"



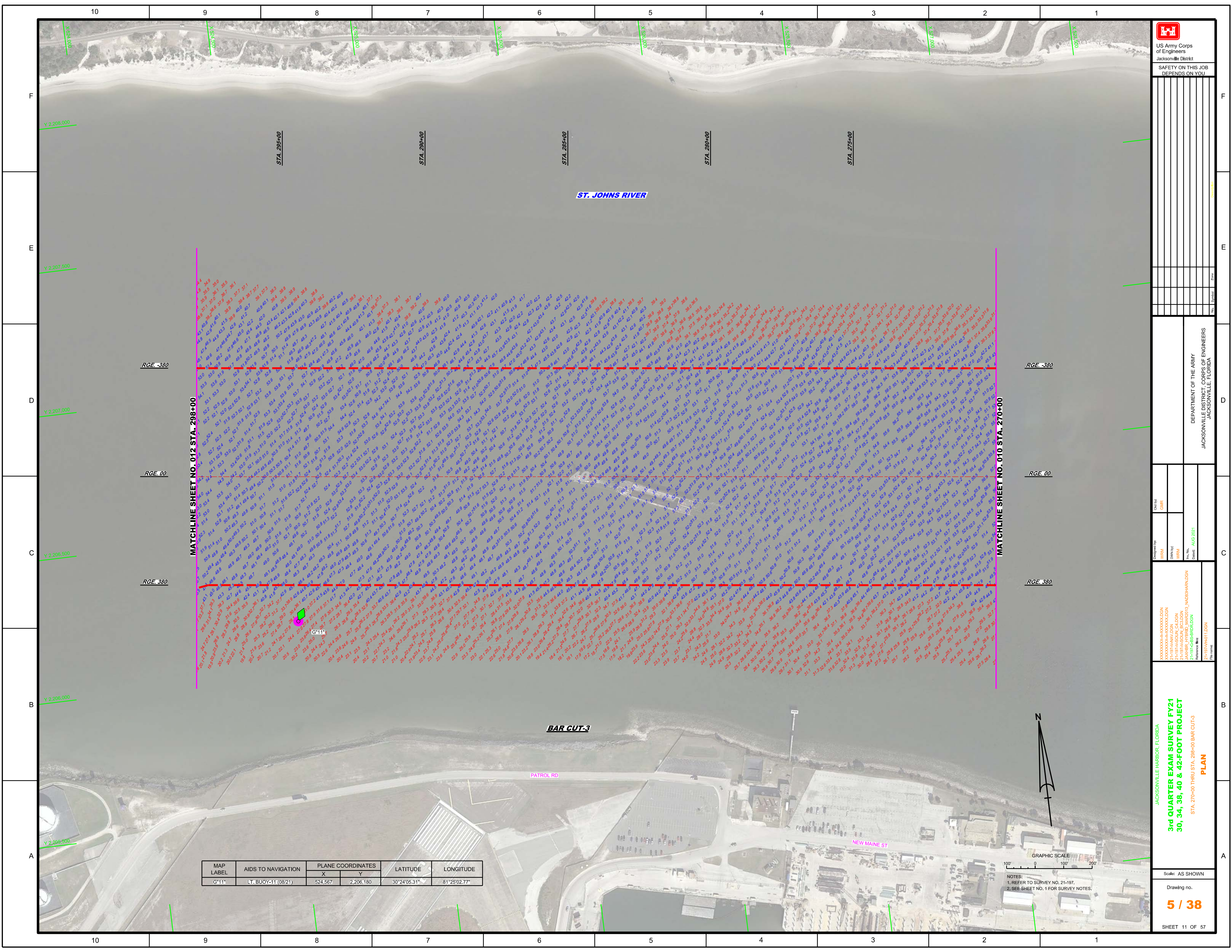
NOTES:
 1. REFER TO SURVEY NO. 21-197.
 2. SEE SHEET NO. 1 FOR SURVEY NOTES.

Scale: AS SHOWN

 Drawing no.

2 / 38


 SHEET 08 OF 57



MAP LABEL	AIDS TO NAVIGATION	PLANE COORDINATES		LATITUDE	LONGITUDE
		X	Y		
G*11	LT. BUOY-11 (08/21)	524,567	2,206,180	30°24'05.31"	81°25'02.77"



NOTES:
 1. REFER TO SURVEY NO. 21-197.
 2. SEE SHEET NO. 1 FOR SURVEY NOTES.



US Army Corps of Engineers
 Jacksonville District
 SAFETY ON THIS JOB
 DEPENDS ON YOU

XXXXXXXXXXXXXXXXXXXX
 2-197-PAV-HARBOR
 2-197-PAV-ADON
 2-197-PAV-SOIL_CALCDN
 2-197-PAV-STRUC_CALCDN
 2-197-PAV-STRUC_CALCDN
 2-197-PAV-STRUC_CALCDN

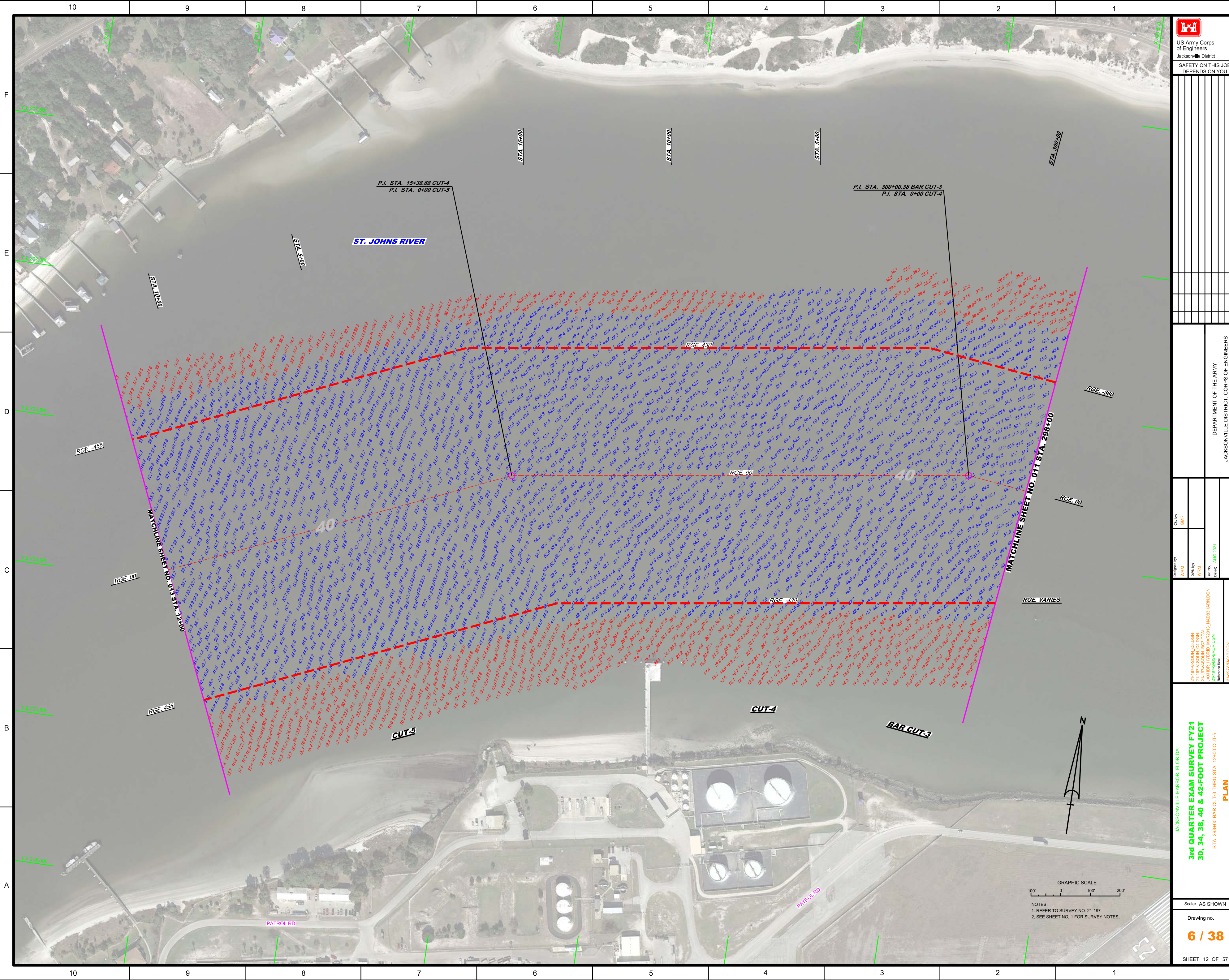
Checked By: GHR
 Drawn By: WRM
 Date: AUG 2021


XXXXXXXXXXXXXXXXXXXX
 2-197-PAV-HARBOR
 2-197-PAV-ADON
 2-197-PAV-SOIL_CALCDN
 2-197-PAV-STRUC_CALCDN
 2-197-PAV-STRUC_CALCDN

Department of the Army
 Jacksonville District, Corps of Engineers
 Jacksonville, Florida

JACKSONVILLE HARBOR, FLORIDA
 3rd QUARTER EXAM SURVEY FY21
 30, 34, 38, 40 & 42-FOOT PROJECT
 STA. 270+00 THRU STA. 298+00 BAR CUT-3
 PLAN

Scale: AS SHOWN
 Drawing no.
5 / 38
 SHEET 11 OF 57





US Army Corps of Engineers
Jacksonville District

SAFETY ON THIS JOB
DEPENDS ON YOU

DEPARTMENT OF THE ARMY
JACKSONVILLE DISTRICT, CORPS OF ENGINEERS
JACKSONVILLE, FLORIDA

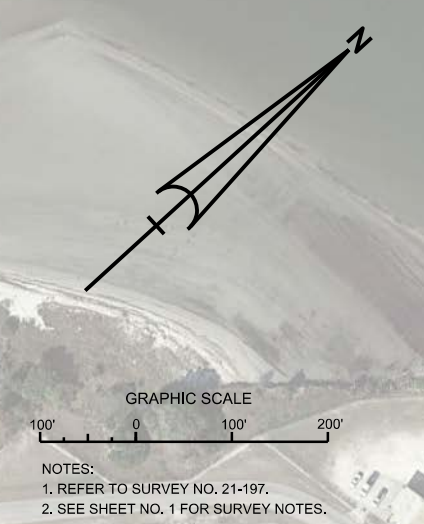
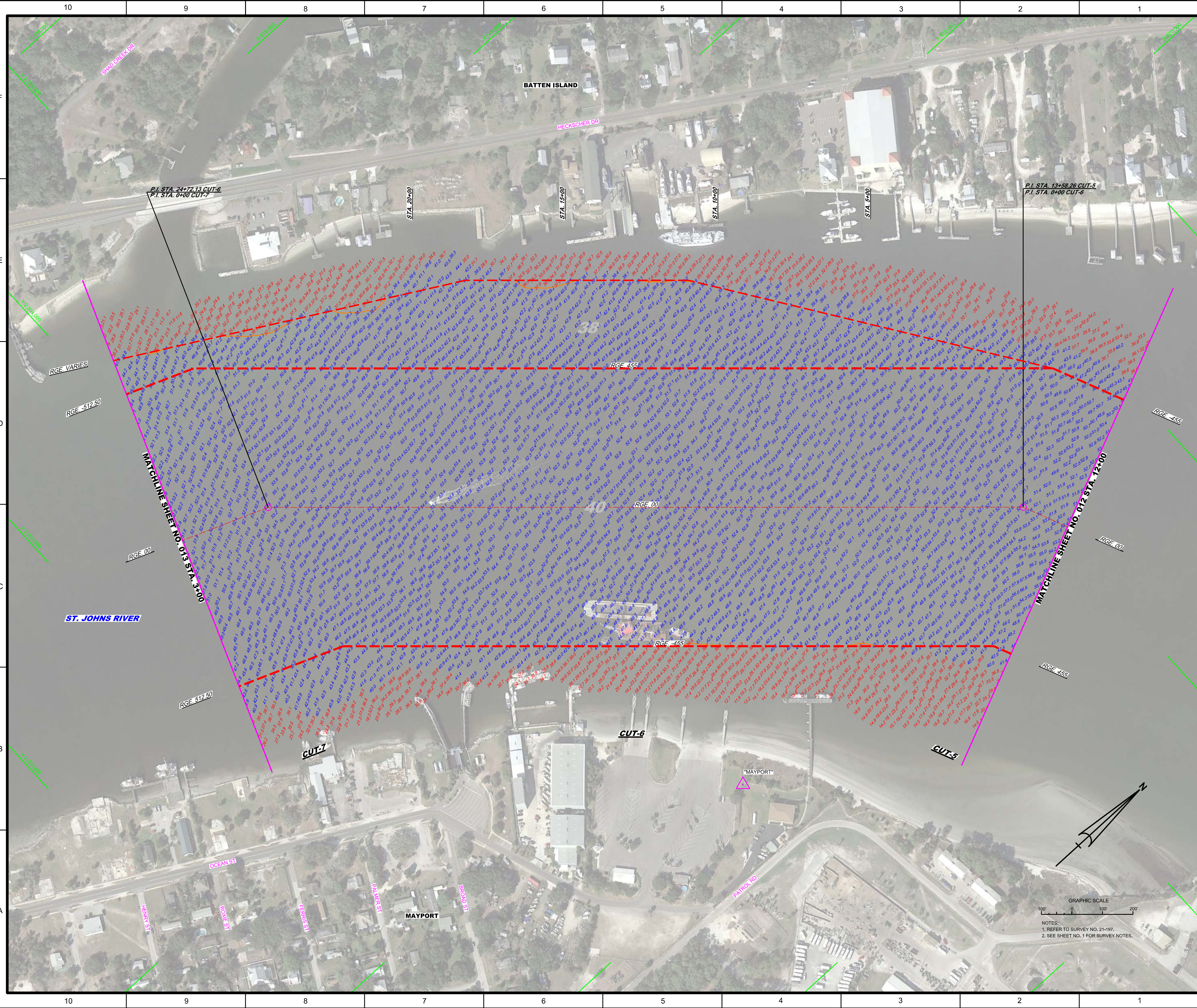
Checked By: GHR
Designed By: WRM
Drawn By: WRM
Reviewed By: JAWBR, JYFRD, MARCO, JNAB, JHARDON
Reference File: 2-197A-HR10LGN
Date: AUG 2021

JACKSONVILLE HARBOR, FLORIDA
**3rd QUARTER EXAM SURVEY FY21
30, 34, 38, 40 & 42-FOOT PROJECT**
STA. 298+00 BAR CUT-3 THRU STA. 12+00 CUT-5
PLAN

Scale: AS SHOWN
Drawing No. **6 / 38**
SHEET 12 OF 57

GRAPHIC SCALE
100' 0 100' 200'

NOTES:
1. REFER TO SURVEY NO. 21-197.
2. SEE SHEET NO. 1 FOR SURVEY NOTES.

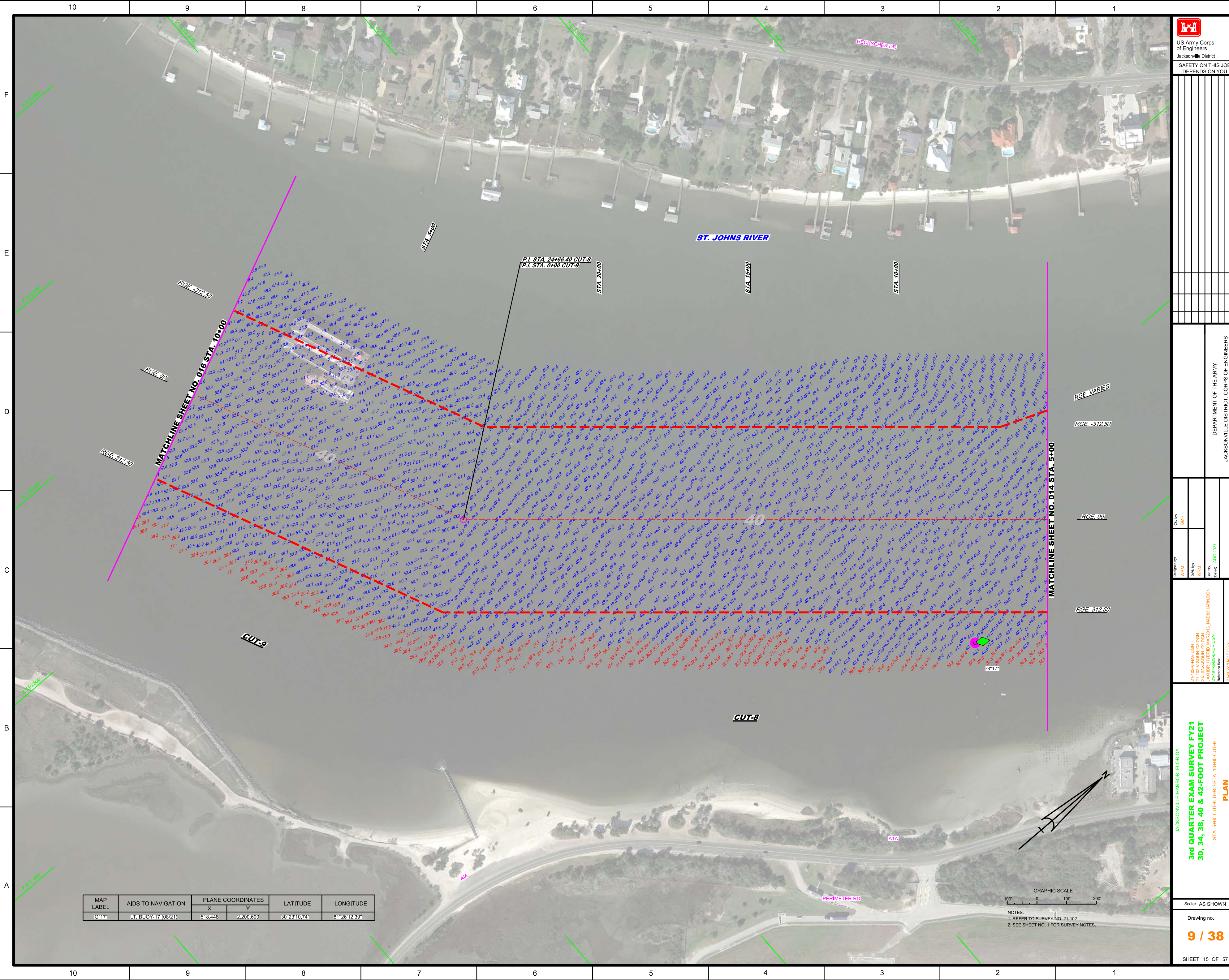



JACKSONVILLE HARBOR, FLORIDA
3rd QUARTER EXAM SURVEY FY21
30, 34, 38, 40 & 42-FOOT PROJECT
 STA. 12+00 CUT-5 THRU STA. 3+00 CUT-7
PLAN

Scale: AS SHOWN
 Drawing no. **7 / 38**
 SHEET 13 OF 57

Checked by:	GHR
Designed by:	WRM
Drawn by:	WRM
Date:	AUG 2021

DEPARTMENT OF THE ARMY
 JACKSONVILLE DISTRICT, CORPS OF ENGINEERS
 JACKSONVILLE, FLORIDA





US Army Corps of Engineers
Jacksonville District

SAFETY ON THIS JOB
DEPENDS ON YOU

DEPARTMENT OF THE ARMY
JACKSONVILLE DISTRICT, CORPS OF ENGINEERS
JACKSONVILLE, FLORIDA

Checked By: GHR
Designed By: WRM
Drawn By: WRM
In Charge: WRM
Date: AUG 2021

21-102-AVAV-DGN
21-102-AV-SOIL-CALC-DGN
21-102-AV-STRUC-DGN
21-102-AV-GEN-DGN
21-102-AV-PLAN-DGN
Reference: 21-102-AV-GEN-DGN

JACKSONVILLE HARBOR, FLORIDA

3rd QUARTER EXAM SURVEY FY21
30, 34, 38, 40 & 42-FOOT PROJECT

STA. 5+00 CUT-8 THRU STA. 10+00 CUT-9

PLAN

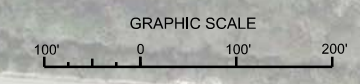
Scale: AS SHOWN

Drawing no.

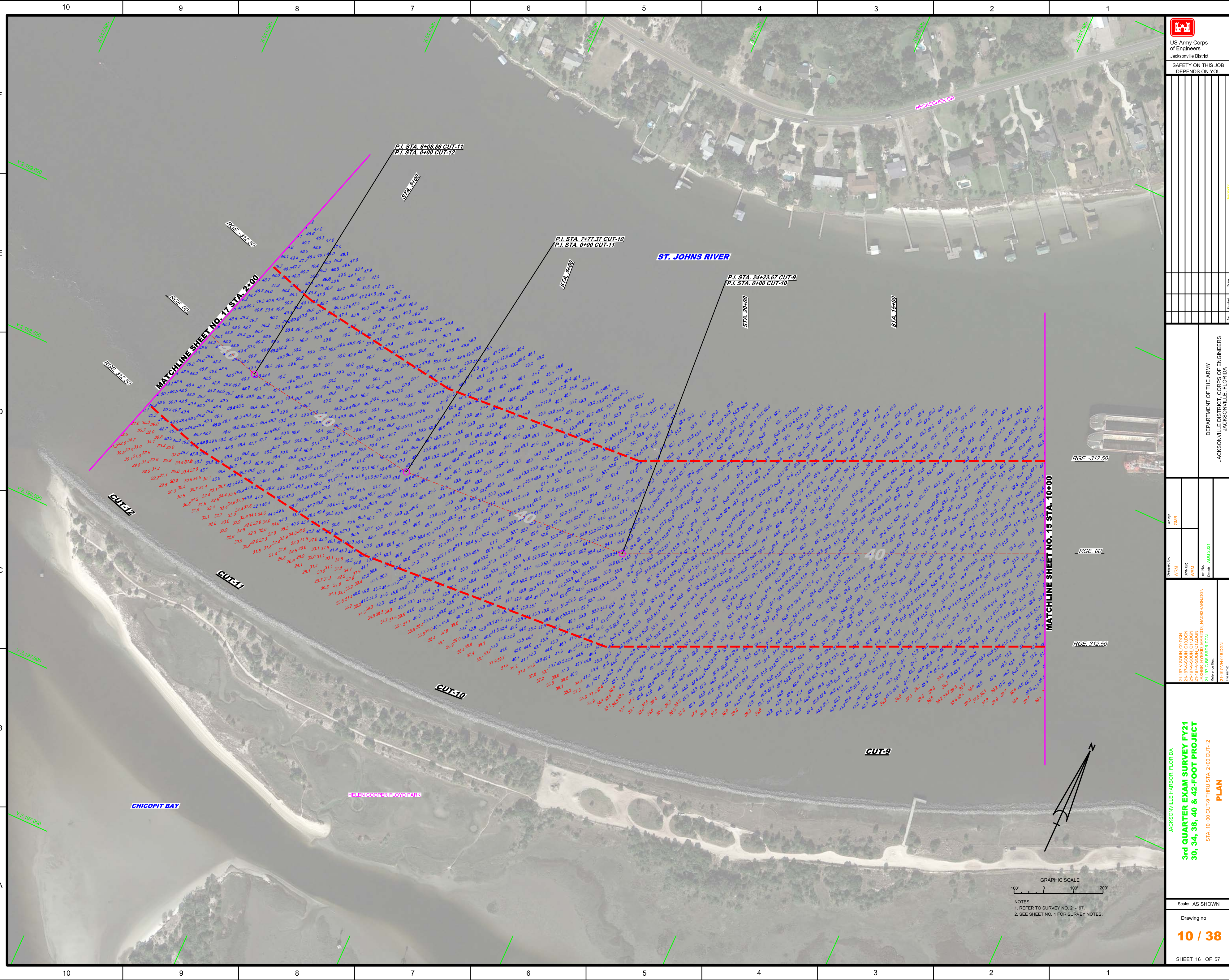
9 / 38

SHEET 15 OF 57

MAP LABEL	AIDS TO NAVIGATION		PLANE COORDINATES		LATITUDE	LONGITUDE
	X	Y	X	Y		
G*17*	LT. BUOY-17 (08/21)		518.448	2,200.690	30°23'10.74"	81°26'12.39"



NOTES:
1. REFER TO SURVEY NO. 21-102.
2. SEE SHEET NO. 1 FOR SURVEY NOTES.



US Army Corps
of Engineers
Jacksonville District
SAFETY ON THIS JOB
DEPENDS ON YOU

No.	Symbol	Zone

DEPARTMENT OF THE ARMY
JACKSONVILLE DISTRICT, CORPS OF ENGINEERS
JACKSONVILLE, FLORIDA

Checked by: GHR
Designed by: WRM
Drawn by: WRM
Scale: AS SHOWN
Date: AUG 2021

JACKSONVILLE HARBOR, FLORIDA
3rd QUARTER EXAM SURVEY FY21
30, 34, 38, 40 & 42-FOOT PROJECT
STA. 10+00 CUT-9 THRU STA. 2+00 CUT-12
PLAN

Scale: AS SHOWN
Drawing no.
10 / 38
SHEET 16 OF 57

NOTES:
1. REFER TO SURVEY NO. 21-197.
2. SEE SHEET NO. 1 FOR SURVEY NOTES.

